

COBP M45 AI

NON-BLOWBACK * 5 mm (0.29)
PLASTIC BBs
AIR SOFT



AAKCCD40 系列說明書 AAKCCD40 INSTRUCTION MANUAL

KWC KIEN WELL TOY INDUSTRIAL CO., LTD
www.kwcgun.com

台南市仁德區義林路168巷89號
NO.89, LN. 168, YILIN RD.,
RENDE DIST., TAINAN CITY
71752, TAIWAN (R.O.C.)
TEL : +886-6-2798175
sales@kwcgun.com
www.kwcgun.com



射擊/SHOOTING

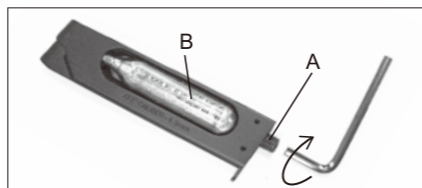
射擊前的準備 BEFORE SHOOTING



1. 按下卡榫
Press the button
2. 取出彈匣
Release the magazine

3. 使用六角扳手反時針方向取出彈匣底內件。
Use hexagonal wrench to remove the magazine cap by counter clockwise.

4. 逆時針轉出彈匣底內件後，置入小鋼瓶B，再以順時針方向鎖緊彈匣底內件A。當刺破鋼瓶出氣時，請快速鎖緊。
Turn the magazine cap a out counter-clockwise and place CO2 cartridge B inside the magazine. Rapidly turn the screw A clockwise when piercing the cartridge in the magazine.



5. 拉下滑粒。
Pull the magazine follower down.
6. 填裝B.B彈。
Loading BBs
為了使擊發順暢，填裝方法是讓B.B彈在彈匣中一粒接著一粒。
For smooth shooting, Load BBs one by one.
7. 最多可裝15粒。
Maximum BB capacity is 15 rounds.

射擊 SHOOTING

1. 將裝好B.B彈的彈匣插入槍身上推入，直到彈匣卡榫發出“卡嗒”為止。
Insert fully loaded magazine in the airsoft until you hear the sound of “CLICK”.



2. 瞄準目標物扣引扳機，則可擊發。
Aim the target and pull the trigger.



▲ 注意：在長期不使用的狀態下，請將彈匣內的氣體洩放掉。

▲ CAUTION : Release all the gas in the magazine when it will be unused for a long period of time.

安全裝置 SAFETY

可射擊
SAFETY OFF



保險
SAFETY ON



故障/BREAK DOWN

關於本商品 ABOUT

- § 上蓋無滑動功能。
There is no Blowback function.
- § B.B彈擊發完後，亦無滑套止動功能。
There is no Hold Open function.
- § B.B彈擊發完後，便是空發扣引。
If the BB runs out, this pistol could still dry fire.
- § 擊鐵可獨立滑動旋轉，但無撞擊功能。
Un-functional Hammer.

故障的原因與排除 BREAK DOWN FAQ

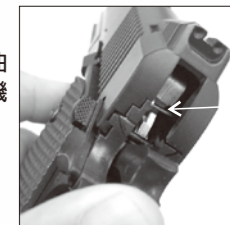
1. 不良的B.B彈是造成卡彈的原因，請使用品質優良的KWC B.B彈。
Bad quality BB is the main reason to cause BB jam. Please use the best quality KWC BB to avoid jamming problem.

2. 當卡彈時，請儘可能先取出彈匣，再以不傷槍管的軟質細棒(不可大於6mm直徑)從槍口置入清除。
When BB jammed, first please release the magazine from pistol then use a soft stick (diameter no bigger than 6mm) to clear up the barrel.

When BB jammed, first please release the magazine from pistol then use a soft stick (diameter no bigger than 6mm) to clear up the barrel.

3. 當扣引扳機時，此時B.B彈即同時在上膛階段，不可扣引一半時又回復，因為如此的動作，將有可能上膛兩發B.B彈。
Pulling trigger will load BB in the barrel. Therefore, please do not pull the trigger half way and release the trigger. This action could load 2 BBs in the pistol and cause jamming.

4. 使用一段時間後，請再次用中性矽油脂潤滑撞針及扳機軸心。
Please spray the lubricant into firing pin and trigger pin.



⚠ WARNING

請務必嚴格遵守 使用說明指導書
READ THIS OWNER'S MANUAL COMPLETELY.

此玩具槍是針對喜愛射擊運動的消費者所開發。避免因使用方法不正確或改造所發生的故障或事故，請務必詳讀說明書，正確的操作享受愉快的射擊運動。

1. 除了發射時外，不要將手指頭掛在板機上。
2. 在非使用期間，請保持保險關閉且退彈的狀態。
3. 如任何的機械產品，槍的保險也可能失效。即使在保險關閉的狀態下也請小心的操作此槍，請勿將槍口對人。
4. 請妥善保管產品在未成年孩童無法伸手取得的場所。
5. 每次使用前後都應該檢查防護措施，假如防護措施表面有失效請停止使用。
6. 請使用高品質BB彈，請勿使用①口徑大於6mm②表面不平滑的③重複使用過的BB彈④非本說明書指名的發射物。
7. 最高的使用及儲藏CO2小鋼瓶環境為50°C(122°F)以內，高溫可能會造成CO2小鋼瓶過熱甚至爆炸。
8. 空擊發易造成零件損耗，請避免此動作。

This airsoft is intended for recreational or training purposes. To prevent improper handling, modification or alteration causing malfunction or accident, please read the owner's manual carefully. Enjoy the pleasant shooting experience by proper operation.

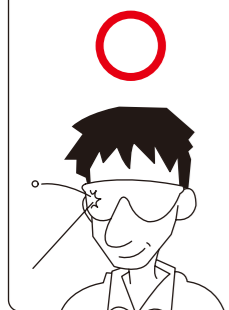
1. Do not put your finger on the trigger except shooting.
2. Please always keep the airsoft on safe and unloaded when not using.
3. Like all mechanical devices, an airsoft safety can fail. Always handle the airsoft safely even when the safety is "on safe". Never point the airsoft at any people.
4. Keep the airsoft out of reach for small children.
5. Your backstop should be inspected for wear before and after each use. Discontinue use of the backstop surface shows signs of failure.
6. Only use high quality BB. Never use ①BB diameter larger than 6mm ②BB with unsmoothed surface ③ reused BB that has been fired ④ incorrect projectiles not design for this airsoft
7. Do not expose CO2 cartridges to heat or store them at temperatures above 50°C(122°F). CO2 cartridges may over heat or explode at temperatures above 50°C(122°F).
8. Please avoid dry firing, for it could cause parts deformed or damage.

⚠️ WARNING 注意事項

AAKCCD40 系列 零件表 AAKCCD40 SERIES PARTS LIST

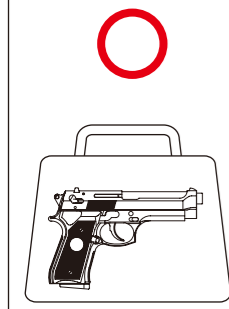
AAKCCD40 系列 零件分解圖 AAKCCD40 SERIES EXPLODED VIEW

★使用玩具槍前，請務必戴上保護眼鏡或面罩。
★Always wear eye protection when using airsoft.



★不可攜帶玩具槍在公共場所行走，請務必裝在袋子或盒子內。

★Always transport an airsoft in a locked carrying case. Make sure it is unloaded and on safe.



Do not display this pistol in public—it may confuse people and may be a crime. 請不要忘了，雖然自己知道這只是玩具，但不知道的人，會以為這是真槍。

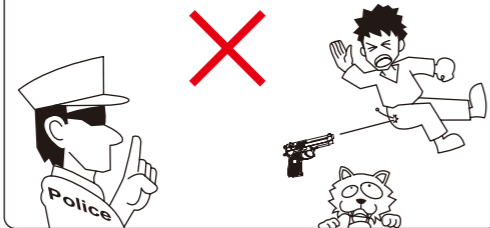
★使用玩具槍前，請務必詳讀說明書內容。
★Read the owner's manual before using the airsoft.



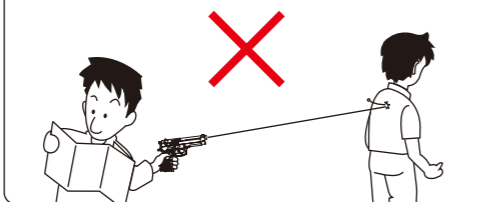
★請不要由槍口向內探視。
★To Avoid accidental discharge, do not look directly into the barrel.



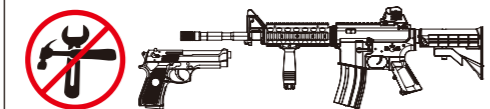
★請不要在公開場合使用玩具槍，也請不要拿玩具槍對準人或動物。
★Never brandish or aiming this airsoft at any people or domestic animals. Brandish this airsoft in public is dangerous and may be a crime.



★請確認後再發射BB彈方向，附近無人或動物存在。
★Always be aware of your surrounding before and during shooting and select a safe area for target practice.

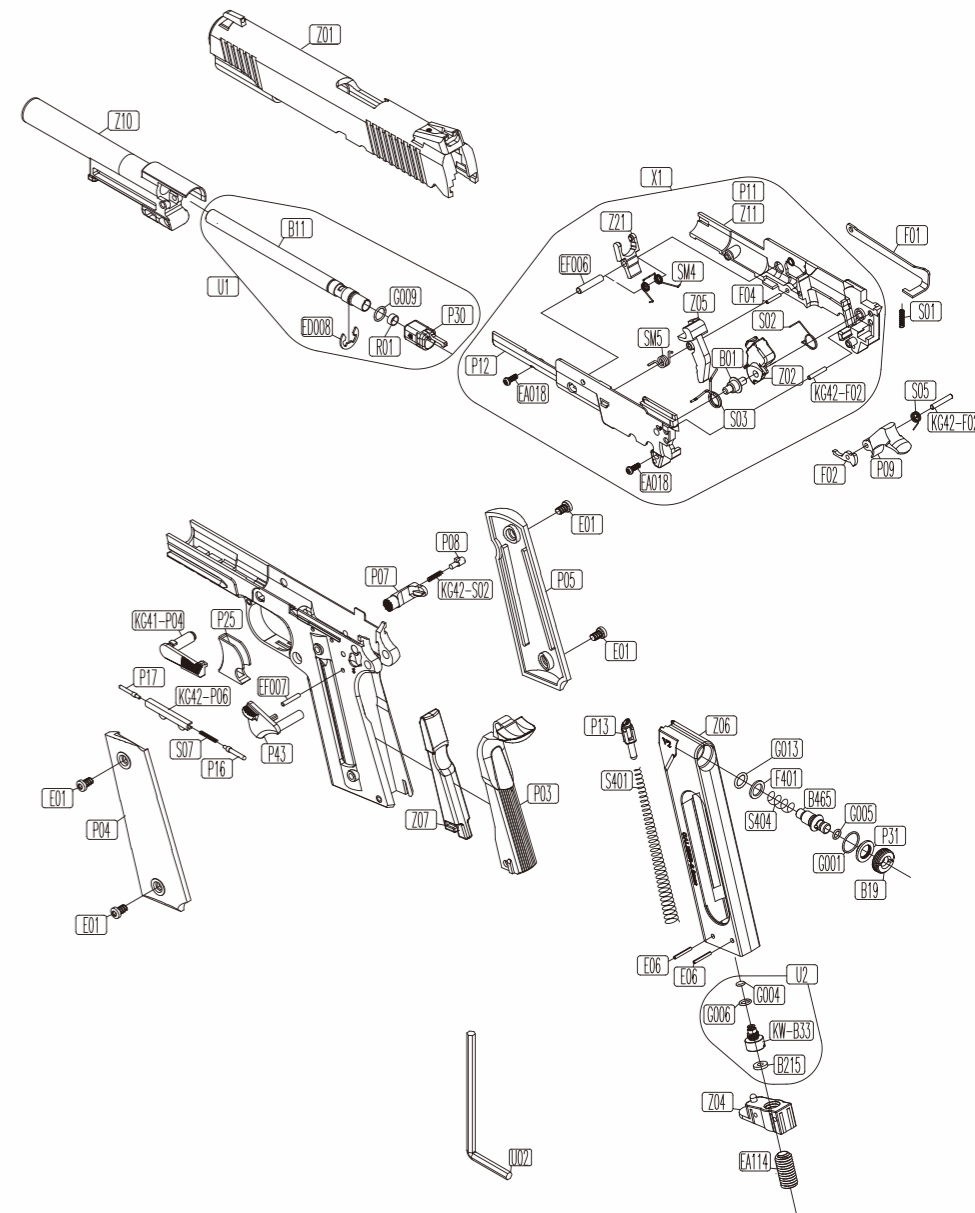


★不可任意改造或加工玩具槍，私自改造加工會造成產品損壞、保固失效，導致使用上不安全，甚至觸法送辦。
★Disassemble, modify, or alter of your airsoft may cause malfunction, void your warranty and may make it unsafe to use.



圖號	零件名稱	UNIT
P03	握柄	REAR GRIP
KG41-P04	上蓋止動片	SLIDE STOPPER
P04	槍柄 (右)	GRIP (R)
P05	槍柄 (左)	GRIP (L)
KG42-P06	保險卡榫導件	SAFETY CATCH GUIDE
P07	彈匣卡榫	MAGAZINE CATCH
P08	彈匣卡榫配件	MAGAZINE CATCH ACCESSORY
P09	擊鐵	HAMMER
P11	擊鐵箱 (右)	CHASSIS (R)
P12	擊鐵箱 (左)	CHASSIS (L)
P13	彈匣滑粒	MAGAZINE FOLLOWER
P16	保險定位軸	SAFETY LOCATOR PIN
P17	上蓋止動片軸	SLIDE STOPPER PIN
P25	扳機	TRIGGER
P30	槍管連動件	BARREL TOW
P31	心棒蓋迫緊 (入口剪齊)	VALVE PACKING
P43	保險 (左)	SAFETY (L)
Z01	上蓋	SLIDE
Z02	撞針	FIRING PIN
Z04	彈匣底座	MAGAZINE BASE
Z05	扳機配件	TRIGGER ACCESSORY
Z06	彈匣	MAGAZINE
Z07	握柄配重	REAR GRIP WEIGHT
Z10	槍管導管	OUTER BARREL
Z21	扳機連動件	TRIGGER CONNECTOR
B01	撞針軸	FIRING PIN AXLE
B11	槍管 (BAX專用)	INNER BARREL
B19	心棒蓋	VALVE CAP
KW-B33	氣瓶頂針 (新規)	PUNCTURE VAVLE
B215	氣瓶頂針迫緊 (TEFLON)	PUNCTURE VAVLE PACKING
B465	心棒	VALVE
E01	槍柄螺絲	GRIP SCREW
E06	彈簧銷	SPRING PIN

圖號	零件名稱	UNIT
ED008	E型扣環	E-RING
EA018	擊鐵箱螺絲	CHASSIS SCREW
EA114	止付螺絲M10X20黑	SCREW M10X20
F01	扳機連桿	TRIGGER BAR
F02	保險釋放件	SAFETY RELEASE
KG42-F02	軸 (擊鐵、擊鐵箱)	PIN (HAMMER · CHASSIS)
F04	軸 (扳機)	PIN (TRIGGER)
EF006	YA-3軸 (扳機連動件軸)	TRIGGER CONNECTOR PIN
EF007	軸 (本體箱)	PIN (FRAME)
F401	心棒壓簧墊圈	VALVE SPRING GASKET
S01	扳機連桿壓簧	TRIGGER BAR SPRING
S02	撞針緩衝扭簧	FIRING PIN BUFFER SPRING
KG42-S02	彈匣卡榫壓簧	MAGAZINE CATCH SPRING
S03	撞針扭簧	FIRING PIN SPRING
S05	擊鐵扭簧	HAMMER SPRING
S07	保險定位軸壓簧	SAFETY LOCATING PIN SPRING
S401	彈匣壓簧	MAGAZINE SPRING
S404	心棒壓簧	VALVE SPRING
SM4	扳機連動件扭簧	TRIGGER CONNECTOR SPRING
SM5	扳機配件扭簧	TRIGGER ACCESSORY SPRING
R01	子彈迫緊 HOP-UP	RUBBER CHAMBER
G001	O形環 $\phi 0.8X \phi 11.3id$ 橘色	O-RING $\phi 0.8X \phi 11.3id$
G004	O形環 1X3	O-RING 1X3
G005	O形環 1X4	O-RING 1X4
G006	O形環 1X5	O-RING 1X5
G009	O形環 1X7	O-RING 1X7
G013	O形環 1.45X6.9id	O-RING 1.45X6.9id
U02	六角扳手	WRENCH
U1	內槍管組件	INNER BARREL UNIT
U2	氣瓶頂針組件	PUNCTURE VAVLE UNIT
X1	擊鐵箱組件	HAMMER CASE UNIT



※零件有時為了改良而不經預告變更。
※SPARE PARTS WILL BE MODIFIED BECAUSE OF IMPROVEMENT. AND THESE MODIFICATIONS WONT HAVE NOTICE.